

# ROYAL

Store Fixture



*R*HEINGAU

Designed to provide maximum  
product visibility

MODEL RM-04-O-SC  
RM-05-O-SC  
RM-06-O-SC  
RM-10-O-SC  
RM-12-O-SC

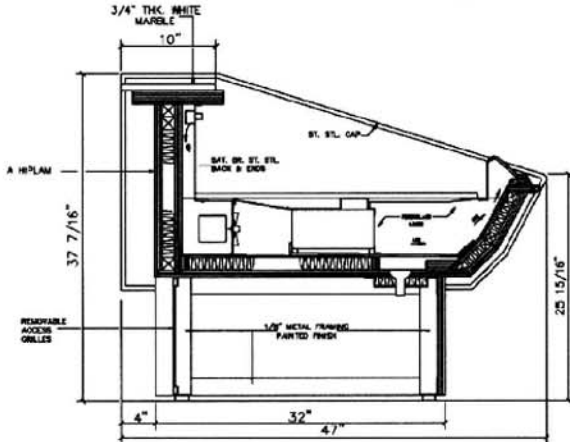
**Deli / Dairy / Prepared Food  
Bakery**

**PARISI**  
INCORPORATED  
ROYAL STORE FIXTURE

**Deli, Salad, Prepared Foods  
Refrigerated, Open Self Service  
Matching Hot Food Profile Available**

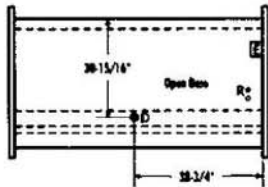
## TYPICAL SECTION

Not to scale.



## PLAN VIEW

Not to scale.



- E - Electrical Connection
- R - Refrigeration Connection (Remote Units Only)
- D - Drain Connection (Remote Units Only)

## FEATURES

**Exterior Finish.** Standard flat matte, high pressure laminate.

**Interior Finish.** Stainless steel.

**Ends.** 3/8 inch thick clear plexiglass.

**Fan Speed Control.** Adjusts fan speed in case.

**Self Contained.** Unit complete with condensate evaporator.

**Marble Ledge.** Standard, rear work surface; other options available.

**UL Listed & UL Sanitation Classified to NSF-7.**

**Warranty.** One year parts and labor on self contained, four year additional compressor replacement included. Remote consult factory.

## SPECIFICATIONS

### Self-Contained

NEW#	Length	Width	Height	HP	Volt	Amps	Weight
RM-04-O-SC	49-5/8"	47"	37 7/16"	1/3	115	7.7	650
RM-05-O-SC	61-1/2"	47"	37 7/16"	1/3	115	8.0	715
RM-06-O-SC	79-1/4"	47"	37 7/16"	1/2	115	12.4	820
RM-08-O-SC	95-1/8"	47"	37 7/16"	1/2	115	13.0	969
RM-10-O-SC	118-7/8"	47"	37 7/16"	3/4	115-208/230	3.9/7.2	1250
RM-12-O-SC	140-5/8"	47"	37 7/16"	3/4	115-208/230	4.7/7.2	1473

### REMOTE

NEW#	Length	Width	Height	BTU	Volt	Amps	Weight
RM-04-O-RM	49-5/8"	47"	37 7/16"	1700	115	1.9	600
RM-05-O-RM	61-1/2"	47"	37 7/16"	2120	115	2.2	664
RM-06-O-RM	79-1/4"	47"	37 7/16"	2720	115	2.8	756
RM-08-O-RM	95-1/8"	47"	37 7/16"	3310	115	3.4	905
RM-10-O-RM	118-7/8"	47"	37 7/16"	4170	115	3.9	1133
RM-12-O-RM	140-5/8"	47"	37 7/16"	4580	115	4.7	1350

\*Floor drain required

\*\*BTU/HR are at +20°F (evaporator) and 90°F ambient

Cases engineered to operate at 75° F and 55% RH

If no floor drain provided, evaporative drain pan must be ordered

Note: 10' and longer Self-Contained units require two dedicated outlets, (1) 115V & (1) 230V.

Specifications subject to change without notice.



## OPTIONS

**Remote Unit.** Case will require floor drain.

Consult factory for details.

**Ice Pans, Scale Stand, Step Displays, Stainless Steel Utensil Holders, Movable Dividers, Deli Accessories.**

**Endless Design.** Cases may be field joined for continuous display.

**Bumper Rails.** Specify color and location.

**Ends.** Glass optional; other configurations available.

**Custom Sizes and Finishes.**

**Matching Counters.**

**Represented By:**

